



USER MANUAL – EN

IN 26625 Mini stepper inSPORTline Movix



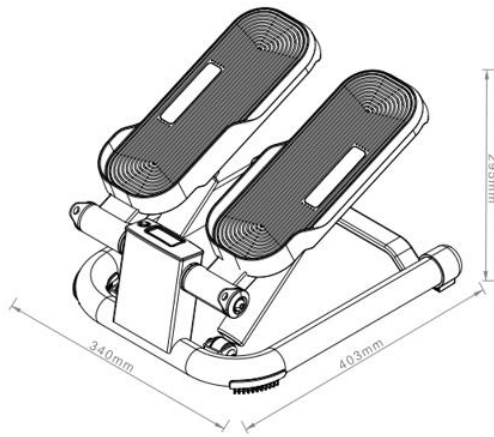
CONTENTS

- SAFETY INSTRUCTIONS..... 3
- SPECIFICATIONS..... 4
- DIAGRAM..... 4
- PARTS LIST 5
- BATTERY REPLACEMENT 5
- DISPLAY..... 6
- USE 6
- MAINTENANCE 6
- WARM UP 7
- USE 7
- ENVIRONMENT PROTECTION 7
- TERMS AND CONDITIONS OF WARRANTY, WARRANTY CLAIMS..... 8

SAFETY INSTRUCTIONS

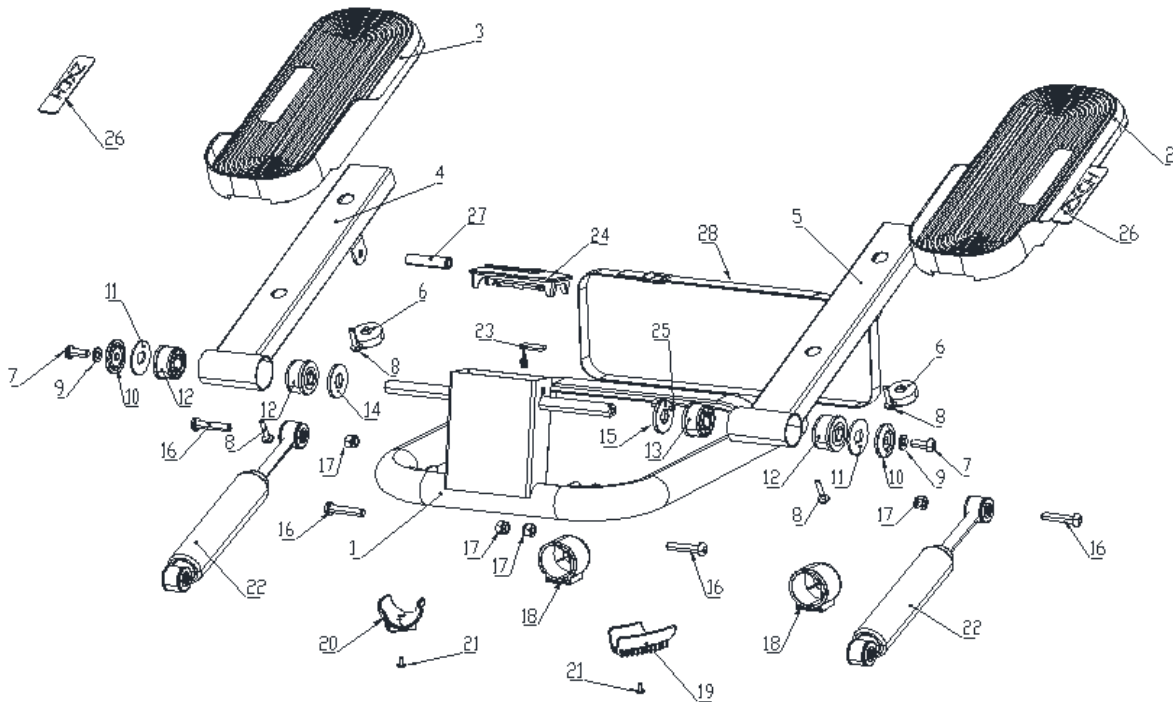
- **WARNING!** Product is designed to provide maximum safety during exercise, but it is necessary to follow all safety instructions. Read the manual carefully and keep it for future reference.
- Owner is responsible for safe use. Teach other users about safe use.
- Use the product only for intended purposes. Do not modify the product.
- Keep away from kids and pets. Do not leave kids and pets unattended around the product.
- Regularly check all screws, nuts and other parts. If it is necessary, tighten all screws and nuts. Regularly check for sign of wears and damage. Never use damaged or worn product. Damaged or worn parts replace immediately.
- Assembly can be done by adult person.
- Place the product on flat, clean, dry and solid ground. For safety purposes keep 0.6 m free space around product. For floor protection use protection pad.
- Do not use outside and keep away from humidity and dust. Keep the room well ventilated during exercise.
- Do not place sharp object near or on product.
- Always wear sport cloth and boots. Do not wear loose clothes, they can get stuck in moving parts.
- Keep your limbs away from moving parts. Adjustable parts must not prohibit movement of user.
- Exercise appropriately to your health condition and keep the speed under control.
- If the product does not work as intended, turn it off immediately.
- Only for one person at the same time.
- Your health can be affected by incorrect or excessive training. Consult your doctor before beginning the training program. Stop the exercise immediately if you notice any health problems. This machine is not suitable for therapeutic purpose.
- Avoid exercise if you have the following or similar problems: leg pain, hip pain, wounded leg, hips or throat, rheumatic discomfort or gout, osteoporosis, heart, blood or pressure problems, breathing difficulties, cancer, thrombosis, diabetes, skin damage, inflammation or temperature, bone problems. The product is also not intended for pregnant women, women in the period or for people who have other medical complication.
- **Maximum user weight:** 110 kg
- **Category:** HC (according to EN 957) suitable for home use.
- **Console is powered by 2x AAA batteries.**

SPECIFICATIONS



Model:	ES1
Classification:	HC
Material:	Iron, PP, ABS
Max. load capacity:	110 kg
Weight:	6.0 kg
Unfolded dimension:	340x403x295 mm
Function:	Scan, time, number of repetitions, distance, calories, total time

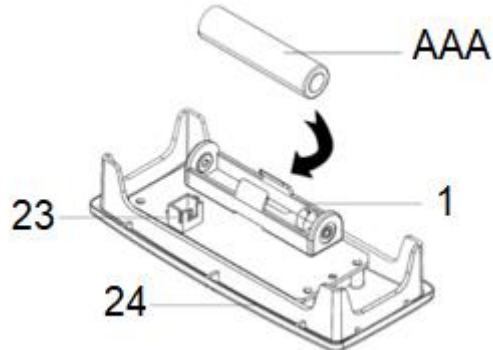
DIAGRAM



PARTS LIST

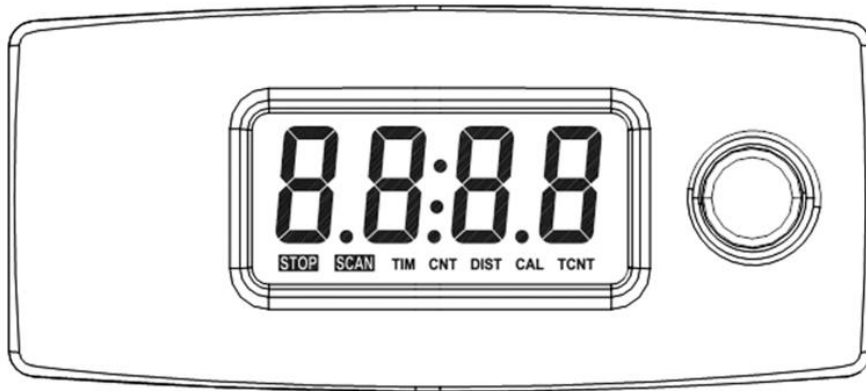
No.	Name	Qty.	No.	Name	Qty.
1.	Main frame	1	15.	Right outer cap $\phi 37.5$	1
2.	Left pedal 330*130*51.5	1	16.	Bolt M8*38	4
3.	Right pedal 330*130*51.5	1	17.	Nut M8	4
4.	Right pedal frame	1	18.	Sleeve 46*48*40	2
5.	Left pedal frame	1	19.	Left feet 68*59*25	1
6.	Damping pedal pad p28*9	2	20.	Right feet 68*59*25	1
7.	Bolt M8*20	2	21.	Phillips screw M4*8	2
8.	Bolt M5*25	4	22.	Piston 8.7-1 in	2
9.	Flat pad p9* $\phi 16$ *1.6	2	23.	Display cable 3.9 inches	1
10.	Outer cover p37.5*8.7	2	24.	Display	1
11.	Bearing washer $\phi 38$ *T2.0	2	25.	Magnet p6*3	1
12.	Bearing housing 037.5*20	3	26.	Logo stickers	2
13.	Bearing housing p37.5*20	1	27.	AAA batteries	2
14.	Left outer cover p37.5	1	28.	Tape - length 1100mm	1

BATTERY REPLACEMENT



- Remove the display (24) from the main frame (1) by disconnecting it from the cable (23).
- Remove the battery.
- Insert a new battery, pay attention to the polarity.
- Plug the cable into the display.
- Insert the display into the main frame.

DISPLAY



FUNCTION

Time (TIM)	Training time, range: 0:00 – 99:59
Number of steps (CNT)	The number of steps, left and right pedals are counted as one step, range: 0 - 9999
Distance (DIST)	Distance, range: 0.0 – 9999
Calories (CALs)	Number of burned calories, range: 0 – 9999
Total number of steps (TCNT)	Total number of steps, range: 0 – 9999

BUTTON

Mode

MODE

Scan (cycle of displayed values) and Lock (locking on one value)

USE

- Press the MODE button to select the display mode of the measured data:
 - If you select the LOCK function, only the selected data will be displayed.
 - If you select the SCAN function, the measured values will be displayed in a cycle every 6 seconds.
- You switch between display modes by pressing the button.
- If you hold the MODE button for 3 seconds, all data except the total number of steps will be reset to zero.
- After 4 minutes of inactivity, the display switches to sleep mode. You wake up the display by pressing the pedals.
- If you remove the battery, all data will be reset to zero.
- If the data on the display is difficult to read, replace the battery.
- Keep away from sunlight.

MAINTENANCE

- Check the screws after 10 hours of use.
- Wipe away sweat after exercise. Clean the device with a cloth and mild detergent. Do not use solvents or aggressive cleaning agents on plastic parts.
- In case of increased noise, check that all connections are properly tightened.

- Place the product in a clean, ventilated and dry room.
- Do not expose the device to direct sunlight.

WARM UP

A successful workout begins with warm-up exercises and ends with cool-down (relaxing) exercises. The warm-up exercises should make your body ready for the main workout. The cool-down phase should protect your muscles from injuries and cramps. Do warm-up and cool-down exercises as shown in the chart below.



Touching your toes

Slowly bend your back from hips. Keep your back and arms relaxed while stretching downwards to your toes. Do it as far as you are able and hold the position for 15 seconds. Bend your knees slightly.



Upper thigh

Lean against a wall with one hand. Reach down and behind you. Lift up your right or left foot to your buttock as high as possible. Keep for 30 seconds and repeat twice for each leg.



Hamstring stretched

Sit and outstretch your right leg. Rest the sole of your left foot against the inside of your right thigh. Stretch out your right arm along your right leg as far as you can. Hold for 15 seconds and relax. Repeat all with your left leg and left arm.



Inside upper thigh

Sit on the floor and place your feet together. Knees are pointed outwards. Pull your feet as close as possible to your groin. Press your knees carefully downwards. Keep this position for 30-40 seconds if possible.



Calves and Achilles tendon

Lean against a wall with your left leg in front of the right one and your arms forward. Stretch out your right leg and keep your left foot on the floor. Bend your left leg and lean forwards by moving your right hip in the direction of the wall. Hold for 30-40 seconds. Keep your leg stretched and repeat exercising with other leg.

USE

HAND EXERCISE

Place the stepper on the table. Make sure it is firmly laid. Sit in front of the stepper and hold the pedals in your hands. You can move the pedals forward or backward.

LEG EXERCISE

Place the stepper on the ground. Make sure it is firmly laid. Sit in front of the stepper. The distance should be sufficient to extend the legs. You can pedal forward or backward.

ENVIRONMENT PROTECTION

After the product lifespan expired or if the possible repairing is uneconomic, dispose it according to the local laws and environmentally friendly in the nearest scrapyards.

By proper disposal you will protect the environment and natural sources. Moreover, you can help protect human health. If you are not sure in correct disposing, ask local authorities to avoid law violation or sanctions.

Don't put the batteries among house waste but hand them in to the recycling place.

TERMS AND CONDITIONS OF WARRANTY, WARRANTY CLAIMS

General Conditions of Warranty and Definition of Terms

All Warranty Conditions stated here under determine Warranty Coverage and Warranty Claim Procedure. Conditions of Warranty and Warranty Claims are governed by Act No. 89/2012 Coll. Civil Code, and Act No. 634/1992 Coll., Consumer Protection, as amended, also in cases that are not specified by these Warranty rules.

The seller is SEVEN SPORT s.r.o. with its registered office in Strakonická street 1151/2c, Prague 150 00, Company Registration Number: 26847264, registered in the Trade Register at Regional Court in Prague, Section C, Insert No. 116888.

According to valid legal regulations it depends whether the Buyer is the End Customer or not.

“The Buyer who is the End Customer” or simply the “End Customer” is the legal entity that does not conclude and execute the Contract in order to run or promote his own trade or business activities.

“The Buyer who is not the End Customer” is a Businessman that buys Goods or uses services for the purpose of using the Goods or services for his own business activities. The Buyer conforms to the General Purchase Agreement and business conditions.

These Conditions of Warranty and Warranty Claims are an integral part of every Purchase Agreement made between the Seller and the Buyer. All Warranty Conditions are valid and binding, unless otherwise specified in the Purchase Agreement, in the Amendment to this Contract or in another written agreement.

Warranty Conditions

Warranty Period

The Seller provides the Buyer a 24 months Warranty for Goods Quality, unless otherwise specified in the Certificate of Warranty, Invoice, Bill of Delivery or other documents related to the Goods. The legal warranty period provided to the Consumer is not affected.

By the Warranty for Goods Quality, the Seller guarantees that the delivered Goods shall be, for a certain period of time, suitable for regular or contracted use, and that the Goods shall maintain its regular or contracted features.

Batteries

6-month battery warranty – we guarantee that battery's nominal capacity does not fall below 70% of its total capacity within 6 months of the product's sale.

The Warranty does not cover defects resulting from (if applicable):

- User's fault, i.e. product damage caused by unqualified repair work, improper assembly, insufficient insertion of seat post into frame, insufficient tightening of pedals and cranks
- Improper maintenance
- Mechanical damages
- Regular use (e.g. wearing out of rubber and plastic parts, moving mechanisms, joints, wear of brake pads/blocks, chain, tires, cassette/multi wheel etc.)
- Unavoidable event, natural disaster
- Adjustments made by unqualified person
- Improper maintenance, improper placement, damages caused by low or high temperature, water, inappropriate pressure, shocks, intentional changes in design or construction etc.

Warranty Claim Procedure

The Buyer is obliged to check the Goods delivered by the Seller immediately after taking the responsibility for the Goods and its damages, i.e. immediately after its delivery. The Buyer must check the Goods so that he discovers all the defects that can be discovered by such check.

When making a Warranty Claim the Buyer is obliged, on request of the Seller, to prove the purchase and validity of the claim by the Invoice or Bill of Delivery that includes the product's serial number, or eventually by the documents without the serial number. If the Buyer does not prove the validity of the Warranty Claim by these documents, the Seller has the right to reject the Warranty Claim.

If the Buyer gives notice of a defect that is not covered by the Warranty (e.g. in the case that the Warranty Conditions were not fulfilled or in the case of reporting the defect by mistake etc.), the Seller is eligible to require a compensation for all the costs arising from the repair. The cost shall be calculated according to the valid price list of services and transport costs.

If the Seller finds out (by testing) that the product is not damaged, the Warranty Claim is not accepted. The Seller reserves the right to claim a compensation for costs arising from the false Warranty Claim.

In case the Buyer makes a claim about the Goods that is legally covered by the Warranty provided by the Seller, the Seller shall fix the reported defects by means of repair or by the exchange of the damaged part or product for a new one. Based on the agreement of the Buyer, the Seller has the right to exchange the defected Goods for a fully compatible Goods of the same or better technical characteristics. The Seller is entitled to choose the form of the Warranty Claim Procedures described in this paragraph.

The Seller shall settle the Warranty Claim within 30 days after the delivery of the defective Goods, unless a longer period has been agreed upon. The day when the repaired or exchanged Goods is handed over to the Buyer is considered to be the day of the Warranty Claim settlement. When the Seller is not able to settle the Warranty Claim within the agreed period due to the specific nature of the Goods defect, he and the Buyer shall make an agreement about an alternative solution. In case such agreement is not made, the Seller is obliged to provide the Buyer with a financial compensation in the form of a refund.

CZ

SEVEN SPORT s.r.o.

Registered Office: Strakonická 1151/2c, Praha 5, 150 00, ČR
Headquarters: Dělnická 957, Vítkov, 749 01
Warranty & Service: Čermenská 486, Vítkov 749 01

CRN: 26847264
VAT ID: CZ26847264
Phone: +420 556 300 970
E-mail: eshop@insportline.cz
reklamace@insportline.cz
servis@insportline.cz

Web: www.inSPORTline.cz

SK

inSPORTline s.r.o.

Headquarters, warranty & service center: Električná 6471, Trenčín 911 01, SK

CRN: 36311723
VAT ID: SK2020177082
Phone: +421(0)326 526 701
E-mail: objednavky@insportline.sk
reklamacie@insportline.sk
servis@insportline.sk

Web: www.inSPORTline.sk

About shipping

